

**Four Brothers** Waiting for warm homes



**The wise one - Joy**  
Large and older dogs with dark coats have a hard time finding adoptive homes, and we hope that Joy, a five-year-old mixed-breed Labrador bitch, will beat the statistics. Joy is a smart dog, relaxed and charming, who gets along well with people and other dogs. She was reared in a yard and is used to finding ways to break out and roam around on the streets. Now she is looking for a new and loving home, preferably an apartment!



**The naïve one - Yabba**  
Yabba is a four-year-old, sweet and innocent mixed-breed tricolored female cat. She is pretty and stylish, loves to be stroked and purrs at every opportunity. Yabba, who was used to living in a family home, didn't lose her joie de vivre when she had to move from her warm home to the cat shelter three months ago, and she is confident that with her agreeable nature and winning personality she will find a new and loving family very soon.



**The wicked one - Bon**  
Bon, a pedigree four-year-old Pekingese, is, needless to say, not wicked and is actually easy-going and relaxed, but he does not get on well with children, who, from his point of view, are an unpredictable and frenetic factor that should be avoided. He is house-trained, loves a routine and comfortable life and would be very happy to be taken in by older people who will allow him to sleep a lot, stroke him and take him out for walks.



**The one who doesn't know how to ask - Roy**  
Roy is a five-month-old mixed-breed, black and brown puppy, still busy discovering his world. He reached us at a very early age, stayed here for a few weeks in the puppy enclosure and is now waiting for owners who will house-train him and take him out for walks. He is friendly and charming, inquisitive and mischievous, looks like a dachshund mixed with a pincher and is, more importantly, brimming over with love.

For more pets for adoption, [Press here](#)

**Help Us Help Them**

SPCA Israel activities is possible thanks to donations. Please help us help them.

Dear animal lovers and friends,

As Pesach and with it, Spring, approach I was asked to write a few words of introduction to our Newsletter. This became difficult because one of the latest additions to our home insists on sitting on me, and helping me type. I'm not complaining, actually I enjoy her and realize how lucky I am to have her and her brothers and sisters; the other animals in our family. Some people say the cats and dogs in our home are lucky because we took them in, but I think it is I who is lucky, being able to give them a warm home

I am saddened by the fact that each time a major holiday approaches, our organization is flooded with cats, dogs and sometimes other animals, which are no longer wanted. It's beyond me how people can make this kind of decision; to dispose of a creature they took into their home and heart, made to feel comfortable and loved and then decided to get rid of. Don't they remember how grateful the same dog or cat was when adopted by them, how much he or she wanted to make them happy, bring a smile to their faces?

It is hard, especially for our staff, to see this happening, knowing that finding a new home is not possible in all cases, and even more so when the animal is older. Therefore we were all so very, very glad when **Simba**, a nine year old mixed-breed Golden Retriever who had been unashamedly dumped by its owner at the Society, did find a new home just before I started writing these lines. I wish more people would opt for older animals, not that I don't want to see the younger ones adopted as well. Still, I would like to send a prayer in favor of adopting an older animal, maybe as an additional pet to the one you already have. Please give it some thought. From my experience, when there is one pet at home, there is always space for another one; they keep each other company when their owners go out and more than everything, they enrich our lives.

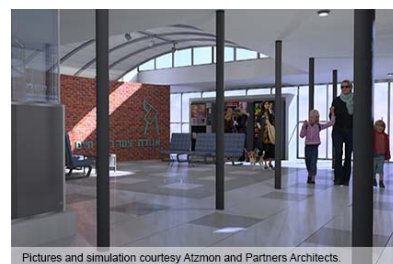
I wish you, in the name of all our staff, a Happy Holiday Season, Chag Sameach,

Hilma Shmoshkovitz  
Chairperson (Volunteer)  
The Society for the Prevention of Cruelty to Animals in Israel



**Humane Education**

The Department for **Humane Education of the SPCA** holds ongoing educational activities on the topic of animals throughout the year. The activities, geared towards groups of all ages and from all sectors, take place in the Society's facility and in various institutions. During Passover we will be hosting groups of soldiers, youth in distress, pupils from the Arab sector, people with special needs, groups from Alut - the Israeli Society for Autistic Children and also children celebrating birthdays. If you are interested in holding a fascinating children's activity, one with special added value, or in organizing a Volunteer Day for the Community in your place of work, please contact us at the following phone number: 1599-50-2005.



**Modern clinic**

**Our animal clinic** has recently been undergoing renovations which are expected to be completed within a couple of months. The aim is to provide both the public and the animals the best care possible, under optimal conditions. The new and modern clinic, planned by Atzmon and Partners Architects, includes two operating theaters, two reception rooms, one x-ray room, a lab, one pre-surgery prep room, one hospitalization room and one recovery room. In addition the lobby area will be renovated and at the main entrance a ramp will be built to provide full access for the disabled. In order to complete the project and to buy state-of-the-art equipment, we would greatly appreciate your donations (in acknowledgement of sums over one thousand NIS, donors' names will be displayed on a plaque designed especially for this purpose).

### Information for Donations:

For contributing by credit card, please enter [our website](#), or call the phone number: 1599-50-2005 (if calling from outside Israel, please call +972-3-5136500).

Checks should be made out to: "Society for Prevention of Cruelty to Animals in Israel" and mailed to us at Society for Prevention of Cruelty to Animals in Israel, 159 Herzl Street, Tel-Aviv 68101 Israel.

Would you wish to send your donation directly to the Society's bank, then the details are as follow: Mercantile Discount Bank Ltd, 16a Jerusalem Boulevard, Tel Aviv-Jaffa; account number 1066, branch number 653, the B.I.C. (swift) code is BARDILIT. I.b.a.n.

number IL020176530000001001061. In case you use this method we would appreciate it if you let us know you made a donation directly to the bank, as otherwise it might be that we do receive the money but will not know who is the donor. Donations in Israel are recognized for tax purposes in Israel, while for the United States of America donations given through P.E.F. Israel Endowment Funds are tax deductible. All contributions must be in US dollars made payable to PEF Israel Endowment Funds, Inc. and may carry a recommendation for the use of the funds. Minimum contribution is \$25. The address is 317 Madison Avenue, Suite 607 New York NY 10017 USA.



### Social Media

The Society for the Prevention of Cruelty to Animals in Israel continues to work full steam in the social networks. The Society's Facebook page already numbers twelve thousand members who assist us in finding adoptive homes for cats and dogs and who experience our activities through this warm and bustling community. Recently an English language page has been added, designed to reach out to our friends abroad and to all for whom Hebrew is not their mother tongue. More than a thousand members have joined this new page and you are also invited to join and to chat to us on Facebook!



### Recycling and Contributing

We all use plastic and glass bottles as well as cans that have a refund value. Now it is possible to recycle them and to contribute their refund value for animal welfare. Recently, the SPCA began to work in cooperation with the Center for Citizen Initiatives - MALI, with the goal of collecting empty beverage containers as contributions to organizations. How does it work? 1. You bring along your empty containers to the Society. 2. People and companies who collect large amounts of containers are invited to contact the Society and a MALI vehicle will come to collect them.